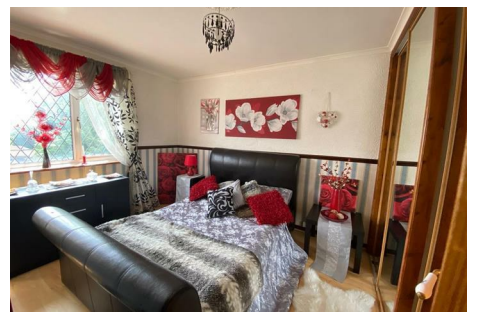
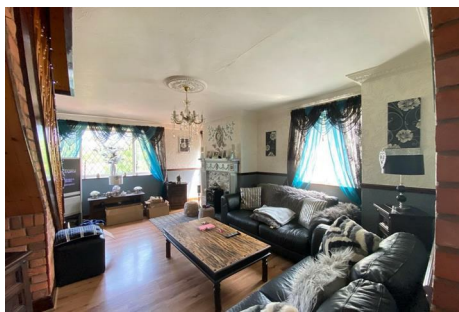




# Trading Places

Coastal and Country Property Specialists



## 12 Botham House St Johns Green, North Shields, NE29 6PG

\*\*\*\* Top Floor Maisonette To Let \*\* Two Bedrooms \*\* Spacious Lounge \*\* Kitchen Dining Room \*\* Bathroom \*\* Secure Intercom System \*\* Available Feb 2026\*\*\*\*

Trading places welcome to the market, to let, this lovely two bedroom, top floor maisonette, located in Botham House on St John's Green, Percy Main. The property is conveniently located with access to the local Metro Station, bus routes and the up and coming Royal Quays and fish quay is also in walking distance. Situated close to the A19 and Tyne Tunnel for South of the Tyne and access into Newcastle.

The property spans over two floors and briefly comprises of: Communal entrance with stairs to upper floors, entrance hall with front door opening to kitchen dining room, lounge, stairs to first floor with landing leading to two bedrooms and a bathroom/W.C. Externally there are communal gardens to the front and rear and there is also off street parking.

Viewing is recommended and can be arranged through our branch on 0191-2511189. EPC Rating D.

### £650 Per Calendar Month

# 12 Botham House

St Johns Green, North Shields, NE29 6PG



- To Let
- Spacious Lounge
- Secure Intercom System
- Top Floor Maisonette
- Kitchen Diner
- Communal Gardens
- Two Bedrooms
- Bathroom/WC
- Available Mid August 2021



[Directions](#)





Floor Plan

These particulars, whilst believed to be accurate are set out as a general outline only for guidance and do not constitute any part of an offer or contract. Intending purchasers should not rely on them as statements of representation of fact, but must satisfy themselves by inspection or otherwise as to their accuracy. No person in this firms employment has the authority to make or give any representation or warranty in respect of the property.

